

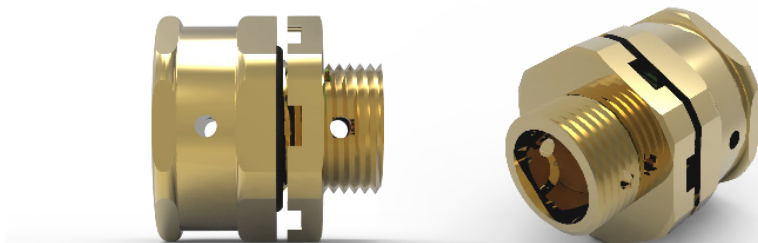


# 389

Metallic Breather Drain



International Approvals



Metallic breather drain designed to be installed onto metric threaded or thinwalled enclosures.  
Suitable for use in Increased Safety protection concepts and mining applications.

## Technical Data

|                        |  |
|------------------------|--|
| Ingress Protection     | IP66   |
| Operating Temperature  | -60°C to +80°C (with Nitrile O-Ring)<br>-60°C to +160°C (with Silicone O-Ring)   |
| Construction Materials | Manufactured in Brass (Standard), Nickel Plated Brass<br>or 316L Stainless Steel |
| Threadform             | M20, M25*  |

\*Metric Thread Length 15mm as standard; Metric Thread Pitch 1.5mm as standard

## Approvals

|                               |  |
|-------------------------------|--|
| Applications                  | Suitable for Use in Zone 1, Zone 21, Zone 2, Zone 22   |
| Protection Class              | Ex II 2GD Ex eb IIC Gb; Ex tb IIIC Db<br>Ex I M2 Ex eb I Mb  |
| Construction & Test Standards | IEC/EN 60079-0, IEC/EN 60079-7 and IEC/EN 60079-31   |
| ATEX Certificate No           | Baseefa 11ATEX0153X  |
| UKEx Certificate No           | BAS21UKEX0043X   |
| IECEx Certificate Number      | BAS11.0075X  |
| Marine Approvals              | ABS: 17-LD1653734-PDA<br>BV: 43523/B0  |
| Additional Certifications     | EAC: No EA3C RU C-GB.HA91.B.00265/21<br>EQM: 20-11-27224/Q20-11-000979/NB0007<br>Inmetro: IEx 15.0208X |

## NEC/CEC

|                               |   |
|-------------------------------|---|
| NEC Protection Class          | Class 1 Zone 1 AEx eb IIC Gb<br>Zone 21 AEx tb IIIC Db                        |
| CEC Protection Class          | Ex eb IIC Gb; Ex tb IIIC Db   |
| c CSA us Certificate          | 2700364   |
| Construction & Test Standards | CSA C22.2 No 0-10; CSA/UL 60079-0, CSA/UL 60079-7, CSA/UL 60079-31, IEC 60529 |

## Ordering Information

| Product | Thread Size | Material | Finish |
|---------|-------------|----------|--------|
| 389     | M20         | Brass    | NP     |